



Sensory Shopping

Your guide to shopping at
The Sovereign Shopping Centre



sovereign
SHOPPING CENTRE



workman
retail & leisure



Sensory Shopping at **The Sovereign Shopping Centre**

We have designed this guide to help you have a pleasant and fun visit to the centre, and feel safe and supported while you are here.

This guide has been set up into sections, to help you find the information you need before you visit, and while you are at the shopping centre. The page numbers and sections are listed below:



Planning your visit:

- 3 Information on opening times**
- 4 How to get to The Sovereign Shopping Centre**
- 5 Getting into the shopping centre**



When you are here:

- 6 How we will support you**
- 7 What shops we have at the centre**
- 8 Floorplan**
- 9 Places to eat**
- 10 People you may see**
- 11 Things you may see**

Address:

The Sovereign Shopping Centre,
600 Christchurch Road, Boscombe, Bournemouth, Dorset BH1 4SX

t 01202 392 721

w www.sovereignshoppingcentre.co.uk

E gill@sovereignshoppingcentre.co.uk

E peter@sovereignshoppingcentre.co.uk



Planning your visit:

Information on opening times

The centre is open **7 days a week**, the opening times are below:

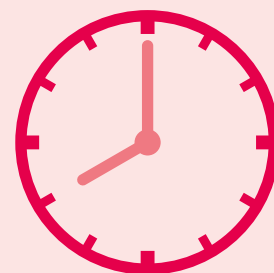
On Monday to Saturday,
we are open:

**Bank
Holidays
8:00am -
6:00pm**

**Store
opening
times may
vary, please
check
website**



8:00 AM



8:00 PM

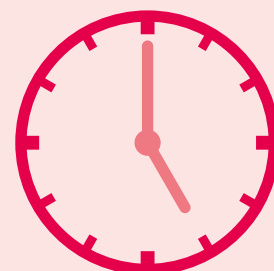
On Sundays, **we are open:**

**Closed
on Easter
Sunday,
Christmas
Day & New
Year's Day**

**Store
opening
times may
vary, please
check
website**



9:00 AM



5:00 PM

The shopping centre is...

quietest:
Monday and
Wednesday

busiest:
Thursday and
Saturday

Planning your visit:

Address: 600 Christchurch Road, Boscombe, Bournemouth, Dorset, BH1 4SX



Travelling by Car - M27 SOUTHAMPTON WESTBOUND

- Continue forward where the M27 becomes the A31
- Branch left, then at Ashley Heath Roundabout take the 1st exit onto the A338 Signposted Bournemouth
- Warning: Speed Cameras along the A338.
- First Exit is Christchurch, **do NOT take this exit.**
- Second Exit is Cooper Dean Roundabout, do NOT take this exit.
- Warning: Speed Cameras after Cooper Dean Roundabout on the A338
- Branch off at next left from the A338 (Signed Football ground), then at roundabout take the 3rd exit onto Holdenhurst Road.
- Turn left onto the A3049 (Ashley Road)
- At roundabout take the 2nd exit onto the A35 Signposted Town Centre (Centenary Way)
- You will now see the Multi Story car park on your left
- Take next left into the car park entrance

CAR PARKING CHARGES

Car parking charges apply 7 days a week and are as follows:

- **Up to 2 Hours – £1**
- **Up to 4 Hours – £2**
- **Over 4 Hours Max 24 – £4**

Please note this is a pay and display car park, so purchase your ticket before shopping.



Travelling by Bus / Coach

- **Wilts & Dorset Buses** (red buses) More 2, 16, 121, X3, together with the University link buses B and C run past the Centre into the Boscombe Bus Station at regular intervals to a variety of locations across the conurbation from Poole, to Christchurch, Burton, Ringwood and Salisbury.
Please visit their website for timetables:
www.wdbus.co.uk
- **Bournemouth Transport** (yellow buses) Bournemouth Transport No's R1, R2, P1, P2, P3, 33, U10 run in and out of the Boscombe Bus Station which is located at the eastern entrance of the Centre by the Peacocks store. These also run at very regular intervals throughout the day from the surrounding areas as far afield as Poole, Westbourne, Winton Christchurch and Kinson.
For more details visit
www.yellowbuses.co.uk



Travelling by Train

- Nearest railway stations are **Pokesdown** and **Bournemouth**.
Please refer to one of the following web sites for up to date train times.
 - www.nationalrail.co.uk
 - www.thetrainline.com



Local Taxi Companies

- United Taxis: **01202 556677**
- www.192.com/directory.cfm/BOURNEMOUTH/TAXI

BAT bus: These are run by the Bournemouth Accessibility Transport and operate daily by postcode area to help people with difficulties to reach us further details can be obtained by calling Sedcat **01202 598295**.

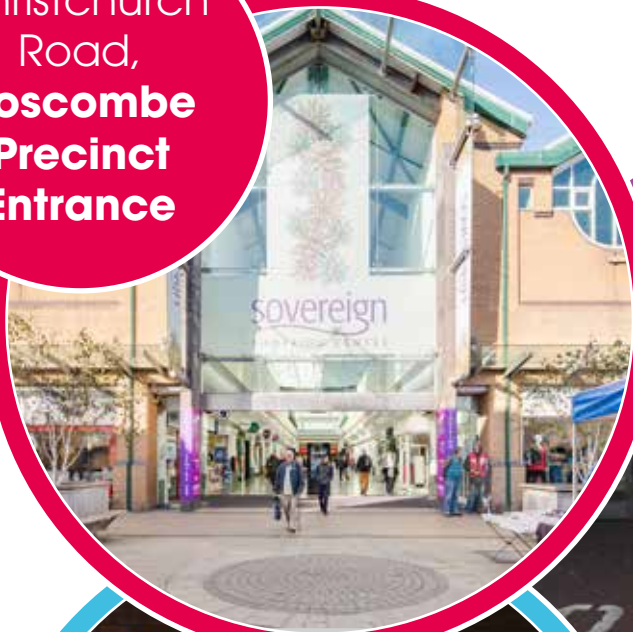
sovereign
SHOPPING CENTRE

Planning your visit:

Getting into the shopping centre

You can enter the centre through **4 entrances**

Christchurch
Road,
Boscombe
Precinct
Entrance



Car Park
Entrance



Penny Lane
Entrance



Bus station
Entrance

sovereign
SHOPPING CENTRE

When you are here:

How we will support you



If you require help, go to the **management Suite**, located opposite **Lidl**, speak to a member of the team or call **01202 392721**

Accessibility

The centre is all on one level and main entrances are fitted with automated door opening controls at wheelchair height
There are no ramps or stairs for you to negotiate anywhere!

The bus station is immediately adjacent to the centre and again on the same level as all our shops and facilities

Parking is also convenient, with multiple disabled bays on the ground floor, the same level as the shops, with large, easy to operate lifts to other parking levels

Sovereign staff and some tenants have completed a **Dementia Friends** session to enable us to support our customers living with Dementia better.



sovereign
SHOPPING CENTRE

When you are here:

What shops we have at the centre

Our most popular shops are:



Lidl

Supermarket, Lidl has a range of high quality fresh food and products offers every day available in store.

Located near car park entrance.



Wilko's

Sells items for the home, gifts and food.

Located in the Penny Lane Mall.



Boots

UK's leading pharmacy and stocks an extensive range of health and beauty products from leading brands, fragrances for her and him, gift sets and much more on Boots.com.

Located in Bus Station Mall.



Poundland

Amazing Value on a huge range of products, including many well known brands for just £1!.

Located in Florin Mall.



When you are here:

Floorplan

The floorplan to the centre is below. If you are struggling to find somewhere, please do ask any member of The Sovereign Shopping Centre Staff. A full list of our shops can be found at: www.sovereignshoppingcentre.co.uk





Our two dedicated toilets can be found near **Wilko**, and **Garden Café** and are opened with your Radar key.

Shopmobility:
 Open Monday to Saturday from 10:00 am to 4:00 pm.
 Visitors to pay a fee of £5 per visit. Annual membership is required at £10 per year.
 Located in Wessex Mobility unit 18, near our car park entrance. Wessex Mobility also sells and can service all mobility products.
 For more information, call **01202 900859** or visit www.wessexmobility.com

Are you struggling to use public transport to visit the Sovereign Shopping Centre? **Sedcat** offer BAT Bus service in postcode areas BH1-BH11 inclusive. To become a member, you would need to complete a short application form. Membership costs £10.00 a year and gives access to the other Community Transport services.
 For more information call **01202 598295** or visit www.sedcat.org.uk



When you are here:

Places to eat

There are many places for you to get food from within the shopping centre:



Incups:

Sells coffee, sandwiches and light snacks.
Located at our main entrance on Christchurch Road and has outside seating



bb's coffee & muffins:

Sells coffee, sandwiches, muffins and light snacks.
Located in the heart of the Centre



Garden Café:

Sells all day breakfast.
Located beside our Bus Station entrance and has outside seating

Do you want to bring your own lunch?

Feel free to use any of our benches situated within the Mall.



Is there a shop or eatery you would like to visit while at the shopping centre?
Please use the space below if you would like to plan your visit:

When you are here: **People you may see**

While at the shopping centre, you may see the following people:



Security Team



Cleaning Team



Customer Experience Manager



Maintenance Engineer



Management Team



Other Shoppers

When you are here:
Things you may see



Kiddie Rides



Photo Booths / ATMs



Promotional Kiosks



Lifts

Advertising Pods



RMUs



Events



Seasonal decorations



We welcome any feedback you may have about this guide.

Did you find it useful?

Is there anything that would
have made your visit better?

Contact us:

Gill Coussens

e: gill@sovereignshoppingcentre.co.uk

tel: 01202 392721



Sponsored by



Retail Marketing, Design & Print.
Total sign and display solutions

Contact: Steve Place
01483 303040
steve@giddenplace.com